

NAPOLEON



DUCTLESS HEAT PUMPS AND AIR CONDITIONERS  
[napoleonheatingandcooling.com](http://napoleonheatingandcooling.com)



# THINK DIFFERENT. THINK NAPOLEON.

Ductless heat pumps and air conditioners are a cost effective alternative to installing a central unit, which could require expensive ductwork and additional heating and cooling equipment. Napoleon's complete line of ductless heat pumps are available in 17 SEER, 21 SEER and 25 SEER models. Napoleon also offers a 15 SEER ductless air conditioner for those who do not require a heating application. Napoleon's ductless heat pumps and air conditioners use a high efficiency direct current compressor motor for a smooth, quiet operation that reduces energy consumption.

Whether you need a single ductless unit, or multiple units throughout your home, heating or cooling, Napoleon has you covered.

**That's Napoleon.**



# DUCTLESS HEAT PUMPS AND AIR CONDITIONERS

## Remote Control

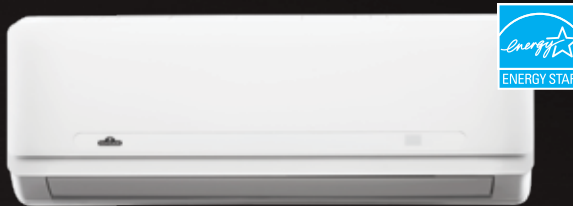
Napoleon's ductless units include a remote control that allows you to conveniently monitor and adjust the temperature settings of your home.

## Customize

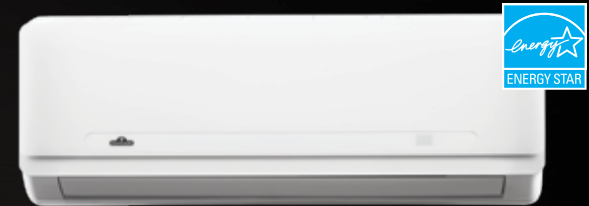
Customize your ductless unit with the following remote control settings:



- Temperature Setting
- On/off
- Mode setting Auto/Cool/Dry/Heat/Fan
- Sleep Mode
- Swing controls the air distribution
- Fan speed setting High/Med/Low
- Timer setting
- Turbo setting to increase fan speed
- LED display



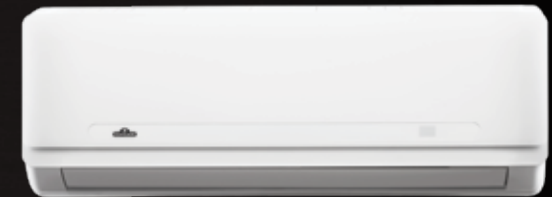
NMZO-27B with NH21-09 Multi-Zone Heat Pump



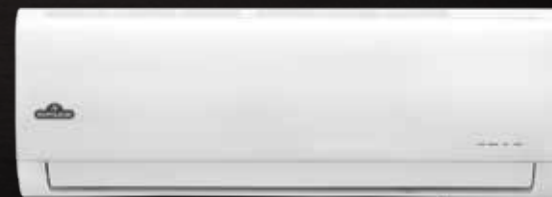
NH21- Heat Pump - Up to 21 SEER



NH25- Heat Pump - Up to 25 SEER



NLIS - Heat Pump - Up to 17 SEER



NC15-B - Air Conditioner - Up to 15 SEER



# DUCTLESS FEATURES



- 1. Auto Restart**  
If the ductless unit turns off unexpectedly due to power outage, it will restart with the previous function setting automatically, once power is restored.



- 2. Sleep Mode**  
Night operation automatically increases cooling or decreases heating 1° C (1.8° F) per hour for the first two hours, then maintains temperature for the next five hours until unit shuts off.



- 3. Functions in Low Temperatures**  
This feature ensures cold weather will not affect the ductless system as it can operate in temperatures as low as -30°C / -22°F day or night.



- 4. Louver Position Memory Function**  
Every time the unit turns on it will automatically move the louvers to the previous angled position.



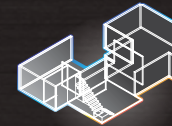
- 5. Auto Defrosting**  
This feature prevents the evaporator from freezing and will prolong the life of the product and save energy.



- 6. Independent Dehumidification**  
Different from the heating or cooling operation, the independent dehumidification mode efficiently removes humidity from your home.



- 7. Remote Control**  
When at home, a remote control allows easy customization of the ductless unit.



- 8. Multi-Zone**  
One outdoor unit operates up to 4 indoor units to accommodate large spaces. Each indoor unit offers individual temperature settings using the remote control.

\* Features vary by unit, see specifications for more details.

## FINDING THE RIGHT UNIT FOR YOUR HOME

Ductless heat pumps and air conditioners are able to heat or cool a home without a duct system by using two key components, an indoor wall mount unit and an outdoor unit. Once the thermostat is set using the remote control, both units work together to manage comfort levels.

The size of your home will determine which unit will best suit your needs. There are up to 4 sizes available for each Napoleon ductless model.

\*Consult your HVAC Technician for proper installation requirements

Outdoor Unit



Indoor Wall Mount Unit



## ELECTRIC HEAT VS. NAPOLEON HEAT PUMP

The average cost to heat with 3 - 1,000 watt electric heater:  
**\$6.32 per day or \$189.60 per month**

**VS.**

The average cost to heat with a Napoleon Ductless Heat Pump:  
**\$2.07 per day or \$62.10 per month**

## UP TO 3x THE COST SAVINGS



**\$1 spent on heating with electric heat is just 33¢ with a Napoleon heat pump**



## MULTI-ZONE DUCTLESS HEAT PUMP

If a space is too large for one ductless system, Napoleon's multi-zone ductless system is the perfect fit. The multi-zone offers up to 4 indoor units that operate from one, powerful outdoor air condenser.

The indoor units can be distributed throughout the home and set to individual temperatures. Indoor options include wall mount units or cassettes.

## CASSETTES

A cassette operates similar to a wall mount. The cassette installs flush with the ceiling to ensure a clean, simple, streamlined finish.

Cassettes and wall mount units can be mixed and matched to suit the needs of your home.



\* Multi-zone units offer different indoor and outdoor models based on each room size and installation requirements. Please note BTU's, SEER ratings and dehumidifying levels will change depending on the models selected.

\*\* Note: All indoor units operate on either cooling or heating at the same time, indoor units cannot operate with select units heating and select units cooling.

† NMHI and NMZO Series states max. refrigerant pipe length for one indoor unit. See installation manual for specifications on installing multiple indoor units.



# MULTI-ZONE

	NCASSETTE12	NCASSETTE18	NH21-09F-I	NH21-12F-I	NH21-18F-I	NMZO-27F-B	NMZO-36F-B
Cooling Capacity (BTH/h)	-	-	-	-	-	*27,000	*36,000
Heating Capacity (BTU/h)	-	-	-	-	-	*28,000	*39,000
SEER	-	-	-	-	-	*22	*16.5
EER	-	-	-	-	-	12	8.9
HSPF4	-	-	-	-	-	9.8	9
HSPF5	-	-	-	-	-	8	7.9
Minimum Circuit Ampacity	1.3	1.9	0.25	0.25	0.4	25	27
Max Fuse	15	15	15	15	15	35	40
Voltage	208-230/60	208-230/60	208-230/60	208-230/60	208-230/60	208-230/60	208-230/60
Indoor Noise Level dB(A) : H/M/L	50-47-43	50-47-43	37-32-27	37-32-27	42-37-34	-	-
Outdoor Noise Level (dB(A))	-	-	-	-	-	~63	~65
Maximum Pipe Length (ft./m)	-	-	-	-	-	† 197ft./60m	† 197ft./60m
Maximum Elevation (ft/m)	-	-	-	-	-	† 49ft./15m	† 49ft./15m
Refrigeration Pipe Diameter (Liquid side / Gas Side) (in)	1/4 / 1/2	1/4 / 1/2	1/4 /3/8	1/4 / 1/2	1/4 / 1/2	1/4 / 3/8	1/4 / 3/8
<b>INDOOR DIMENSIONS</b>	<b>NCASSETTE12</b>	<b>NCASSETTE18</b>	<b>NH21-09F-I</b>	<b>NH21-12F-I</b>	<b>NH21-18F-I</b>	<b>NMZO-27F-B</b>	<b>NMZO-36F-B</b>
Width (in)	22.44	22.44	31.25	31.25	42.52	-	-
Depth (in)	22.44	22.44	7.75	7.75	8.90	-	-
Height (in)	10.24	10.24	10.5	10.5	13.19	-	-
<b>OUTDOOR DIMENSIONS</b>	<b>NCASSETTE12</b>	<b>NCASSETTE18</b>	<b>NH21-09F-I</b>	<b>NH21-12F-I</b>	<b>NH21-18F-I</b>	<b>NMZO-27F-B</b>	<b>NMZO-36F-B</b>
Width (in)	-	-	-	-	-	37.24	37.24
Depth (in)	-	-	-	-	-	16.14	16.14
Height (in)	-	-	-	-	-	31.89	31.89
<b>COMPARISON CHART</b>	<b>NCASSETTE12</b>	<b>NCASSETTE18</b>	<b>NH21-09F-I</b>	<b>NH21-12F-I</b>	<b>NH21-18F-I</b>	<b>NMZO-27F-B</b>	<b>NMZO-36F-B</b>
Auto-Restart	•	•	•	•	•	•	•
Sleep Mode	•	•	•	•	•	-	-
Functions in Low Temperatures	-	-	-	-	-	-25°C/-13°F	-25°C/-13°F
Louver position memory function	•	•	•	•	•	-	-
Refrigerant leakage detection	•	•	•	•	•	-	-
Auto defrosting	•	•	•	•	•	•	•
Independent Dehumidification	•	•	•	•	•	•	•
Hyper Heat Remote	-	-	-	-	-	-	-
Standard Remote	-	-	-	-	-	-	-
Self Diagnostic Controls	•	•	•	•	•	•	•



# NAPOLEON - CELEBRATING OVER 40 YEARS OF HOME COMFORT PRODUCTS



24 Napoleon Road, Barrie, Ontario, Canada L4M 0G8  
103 Miller Drive, Crittenden, Kentucky, USA 41030  
7200 Trans Canada Highway, Montreal, Quebec, Canada H4T 1A3

Tel: 1-866-820-8686  
napoleonheatingandcooling.com



All specifications and designs can change without notice to allow for on-going product improvement. Images may not be exactly as shown. Consult your owners manual for current information. Check all local and national building codes and gas regulations. Napoleon is a registered trademark of Wolf Steel Ltd. © Wolf Steel Ltd.

Authorized Dealer